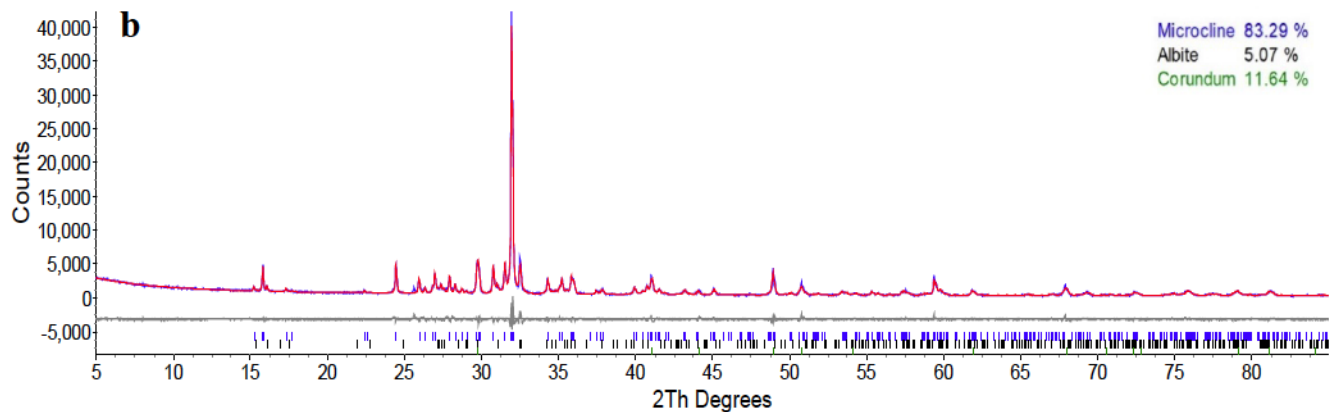
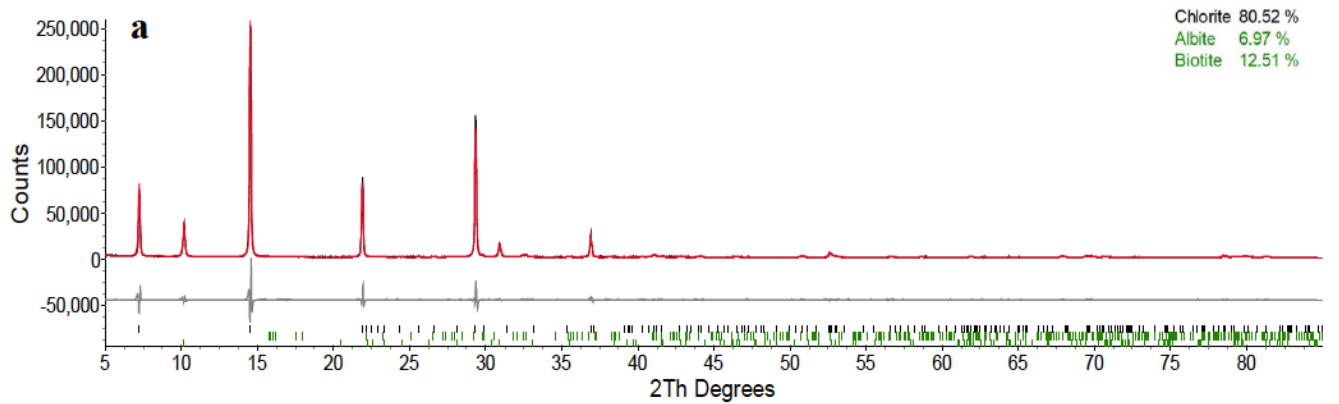


Supplemental Materials

QUANTITATIVE XRD ANALYSIS OF FOUR SILICATE SAMPLES

Quantitative XRD analysis results for four silicate samples are presented in Figure S1a–d. 15 wt.% corundum (Al_2O_3) was added to some samples as an internal standard for 2θ calibration and comparison with the TOPAS refinement results. The wt% of corundum resulting from TOPAS analysis being slightly less than the actual wt%, indicates that the quantitative XRD results are reliable and that no amorphous phases were contained in the samples. The wt% of corundum was normalised out and the wt% of the remaining silicate mineral component is presented in the main text.



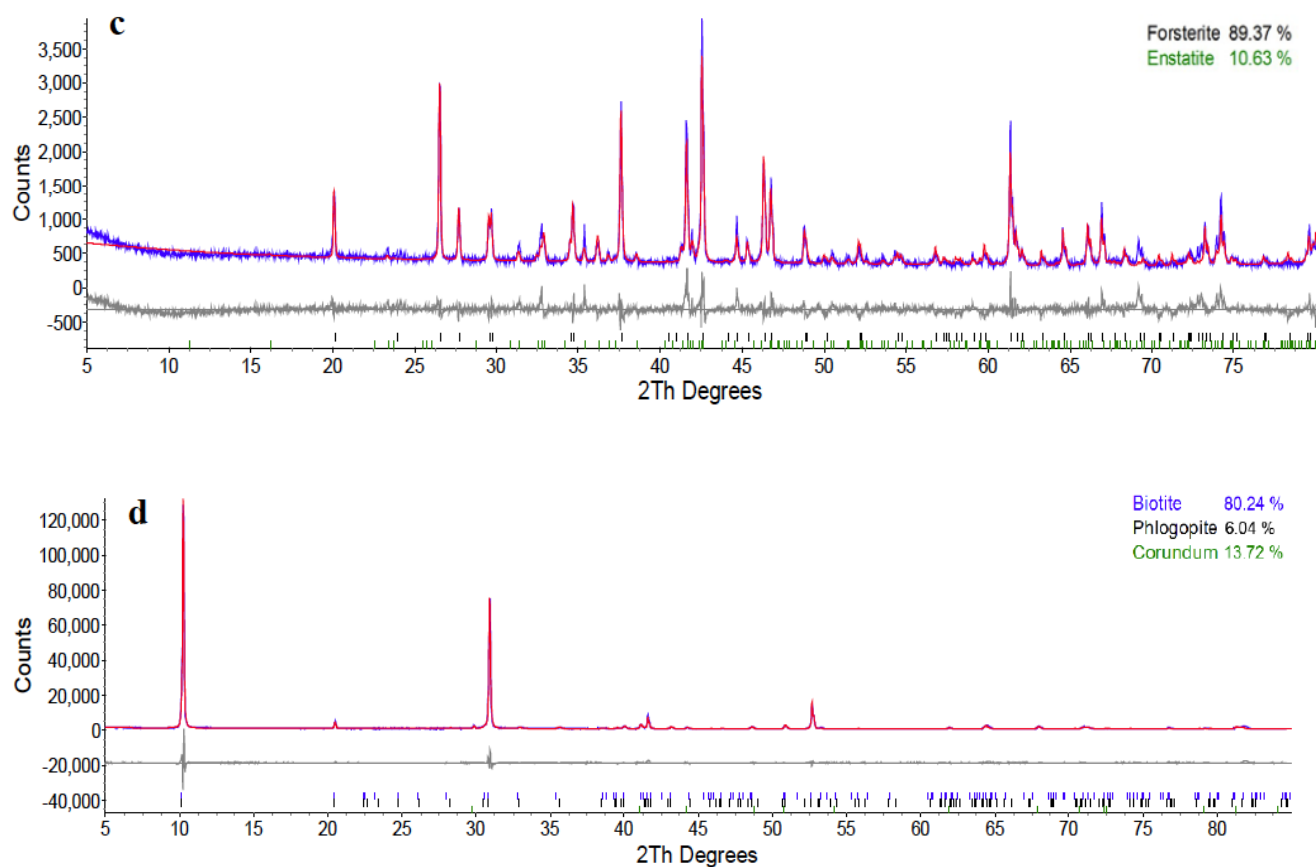


Figure S1: Quantitative XRD analysis of chlorite (a), K-feldspar (b), olivine (c) and biotite (d), using TOPAS.